

**Self Control
 Fuse**

CYG Wayon Circuit Protection Co.,Ltd.
 No.1001, Shiwang Qi Road, Shanghai 201207,China
 Tel: 86-21-50968309 Fax: 86-21-50968310
 E-mail: market@way-on.com [Http://www.way-on.com](http://www.way-on.com)



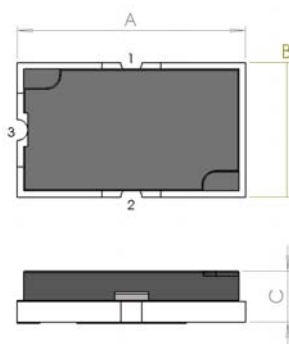
WPF Series

Features

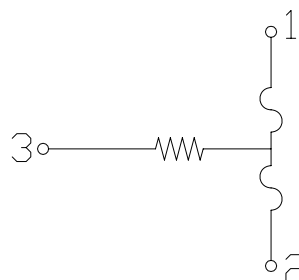
- ✧ SMD Electronic devices
- ✧ High structural intensity
- ✧ Compatible with reflow soldering processes
- ✧ One device to achieve overcurrent protection and overcharge protection
- ✧ Over heating protection.

Product Dimensions and Equivalent Circuit (mm)

A	B	C
4.0±0.2	3.0±0.2	0.85max



Product Dimensions



Equivalent Circuit

Specification

Part number	Current Rating	Voltage Rating	Operating Voltage	Fuse DCR ⁽¹⁾	Heater DCR ⁽²⁾	Interrupting Rating
	A	VDC	V	mΩ	Ω	A
WPF12A1D	12	36	3.0-4.5	1.5-3.5	0.6-1.5	50
WPF12A2D	12	36	4.0-9.0	1.5-3.5	2.0-3.2	50
WPF12A3D	12	36	7.4-13.8	1.5-3.5	5.7-9.9	50
WPF12A4D	12	36	10.5-19.6	1.5-3.5	11.2-20.0	50
WPF15A2D	15	36	5.0-9.0	1.0-3.0	2.2-3.3	50
WPF15A3D	15	36	7.4-13.8	1.0-3.0	5.5-8.4	50
WPF15A4D	15	36	10.5-19.6	1.0-3.0	10.4-15.8	50
WPF15A5D	15	36	14.4-23.5	1.0-3.0	17.9-29.1	50

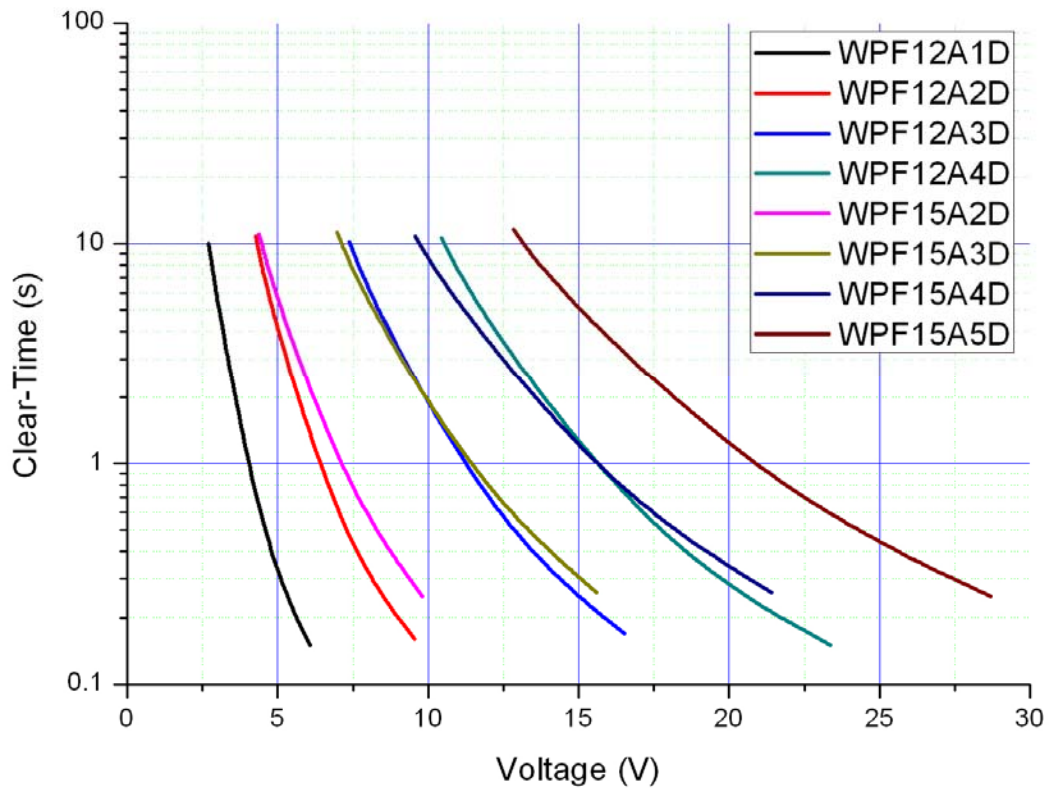
Notice: 1. Fuse DCR=R12
 2.Heater DCR=R13 or R23

Part Numbering

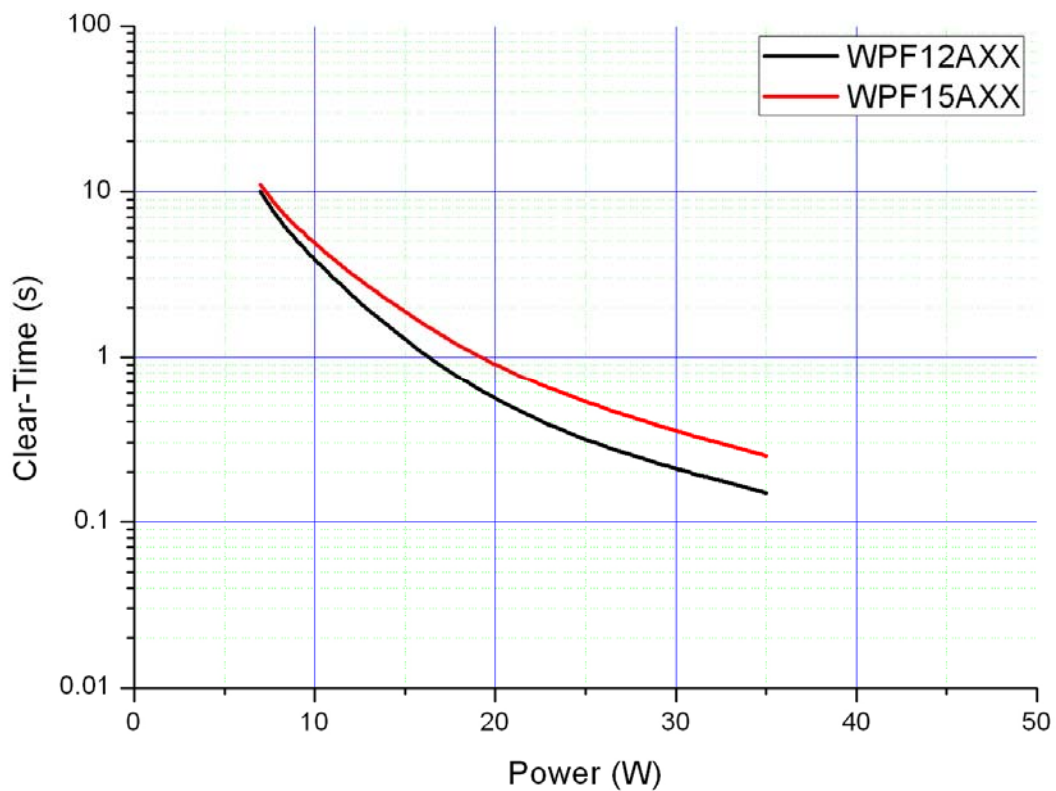
WPF12A1D
 1 2 3 4 5

1. Way-on Product
2. Self-Control Fuse
3. Current Rating=12A
4. Number of applicable cells
 Can be "a-z" or "0-9", do not have any effect on electrical properties

U-T Curve



P-T Curve



I-T Curve

